

PPP2R3 Rabbit pAb
PPP2R3 Rabbit pAb
Catalog # AP93964

Specification

PPP2R3 Rabbit pAb - Product Information

| | |
|--------------------------------|--|
| Application | WB, IHC-P, IHC-F, IF |
| Primary Accession | Q06190.1 |
| Reactivity | Human |
| Host | Rabbit |
| Clonality | Polyclonal |
| Calculated MW | 130 KDa |
| Physical State | Liquid |
| Immunogen | KLH conjugated synthetic peptide derived from human PPP2R3 |
| Epitope Specificity | 801-900/1150 |
| Isotype | IgG |
| Purity | |
| affinity purified by Protein A | |
| Buffer | 0.01M TBS (pH7.4) with 1% BSA, 0.02% Proclin300 and 50% Glycerol. |
| SIMILARITY | Contains 2 EF-hand domains. |
| SUBUNIT | PP2A consists of a common heterodimeric core enzyme, composed of a 36 kDa catalytic subunit (subunit C) and a 65 kDa constant regulatory subunit (PR65 or subunit A), that associates with a variety of regulatory subunits. Proteins that associate with the core dimer include three families of regulatory subunits B (the R2/B/PR55/B55, R3/B''/PR72/PR130/PR59 and R5/B'/B56 families), the 48 kDa variable regulatory subunit, viral proteins, and cell signaling molecules. |
| Important Note | This product as supplied is intended for research use only, not for use in human, therapeutic or diagnostic applications. |

Background Descriptions

The B regulatory subunit might modulate substrate selectivity and catalytic activity, and also might direct the localization of the catalytic enzyme to a particular subcellular compartment.

PPP2R3 Rabbit pAb - Additional Information

Target/Specificity

Expressed in heart, brain, placenta, lung, muscle and kidney.

Dilution

WB~1:1000<br \><span class

=IHC-P~~N/A<br \>IHC-F~~N/A<br \>IF~~1:50~200

Format

0.01M TBS(pH7.4), 0.09% (W/V) sodium azide and 50% Glyce

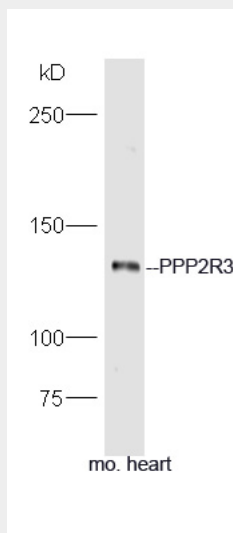
Storage

Store at -20 °C for one year. Avoid repeated freeze/thaw cycles. When reconstituted in sterile pH 7.4 0.01M PBS or diluent of antibody the antibody is stable for at least two weeks at 2-4 °C.

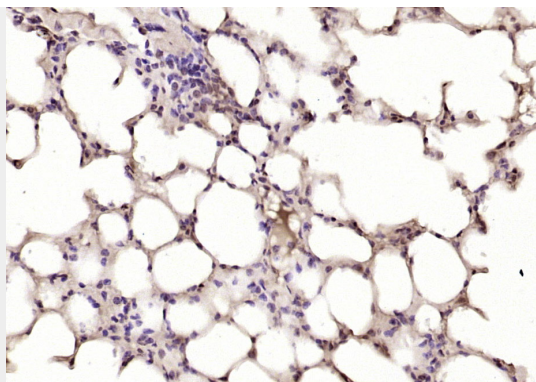
PPP2R3 Rabbit pAb - Protein Information**PPP2R3 Rabbit pAb - Protocols**

Provided below are standard protocols that you may find useful for product applications.

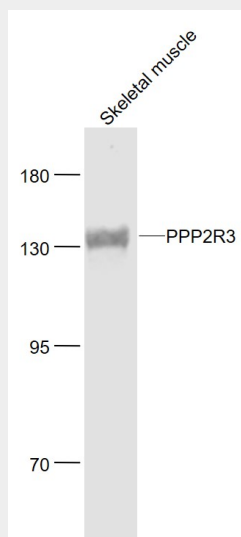
- [Western Blot](#)
- [Blocking Peptides](#)
- [Dot Blot](#)
- [Immunohistochemistry](#)
- [Immunofluorescence](#)
- [Immunoprecipitation](#)
- [Flow Cytometry](#)
- [Cell Culture](#)

PPP2R3 Rabbit pAb - Images

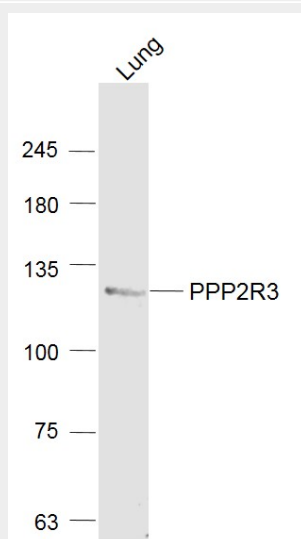
Sample: Heart (Mouse) Lysate at 40 ug Primary: Anti-PPP2R3 (AP93964) at 1/300 dilution
Secondary: HRP conjugated Goat-Anti-rabbit IgG (bs-0295G-HRP) at 1/5000 dilution Predicted
band size: 130 kD Observed band size: 130 kD



Paraformaldehyde-fixed, paraffin embedded (mouse lung); Antigen retrieval by boiling in sodium citrate buffer (pH6.0) for 15min; Block endogenous peroxidase by 3% hydrogen peroxide for 20 minutes; Blocking buffer (normal goat serum) at 37°C for 30min; Antibody incubation with (PPP2R3) Polyclonal Antibody, Unconjugated (AP93964) at 1:200 overnight at 4°C, followed by operating according to SP Kit(Rabbit) (sp-0023) instructions and DAB staining.



Sample: Skeletal muscle (Mouse) Lysate at 40 ug Primary: Anti- PPP2R3 (AP93964) at 1/1000 dilution Secondary: IRDye800CW Goat Anti-Rabbit IgG at 1/20000 dilution Predicted band size: 130 kD Observed band size: 130 kD



Sample: Lung (Mouse) Lysate at 40 ug Primary: Anti- PPP2R3 (AP93964) at 1/1000 dilution
Secondary: IRDye800CW Goat Anti-Rabbit IgG at 1/20000 dilution Predicted band size: 130 kD
Observed band size: 130 kD

PPP2R3 Rabbit pAb - Background

This product as supplied is intended for research use only, not for use in human, therapeutic or diagnostic applications.